



FORT SMITH ANTIQUE AUTOMOBILE CLUB FEBRUARY NEWSLETTER

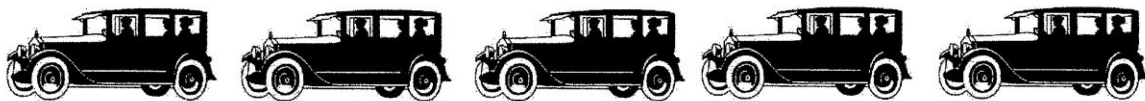


Valentine's Dinner



February 12, 2018

Sam's Southern Eatery 9709 Rogers Avenue
6:00 p.m.



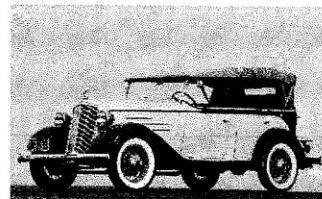
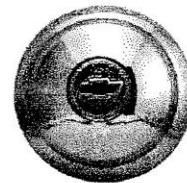
Monthly Membership Meeting at Creekmore Park Thursday, February 15, 2018 6:30 p.m.



Chili/Soup with all the fixings



The 10,000,000 Chevy was built in 1934. Thanks to progress in steel stamping technology, one piece "Turret Top" steel roofs appeared on the 1935 Chevys. Hydraulic brakes became standard equipment in 1936. While only six cylinder engines were available on Chevrolets throughout the 30's, horsepower did go up from 50 in 1930 to 85 in 1939. Engine size grew from 194 cubic inches in 1930 to 216.5 cubic inches in 1939.





A PEEK AT THE US MARSHALS MUSEUM!!



There were seventeen present for our February breakfast at Calico County. As usual we yakked like we hadn't seen each other in months. Albertsons and DeArmonds were the only ones who braved the cold in an old car.

Then, we had a rare opportunity to get a preview of the Marshals Museum which will be opening September 24, 2019. Our host was Patrick Weeks, President and CEO, who gave a visual presentation of the 53,000 sq. ft. building, of which 20,000 feet will be dedicated to story telling. This highly interactive museum will be unusual in that visitors will be doing less reading and more listening, as visual historical events appear in mirrors behind the bar in the saloon and elsewhere. I was blown away seeing the possibility of lifelike marshals sitting around a campfire while ghostly images appear on a big rock nearby, to tell their stories of the past.

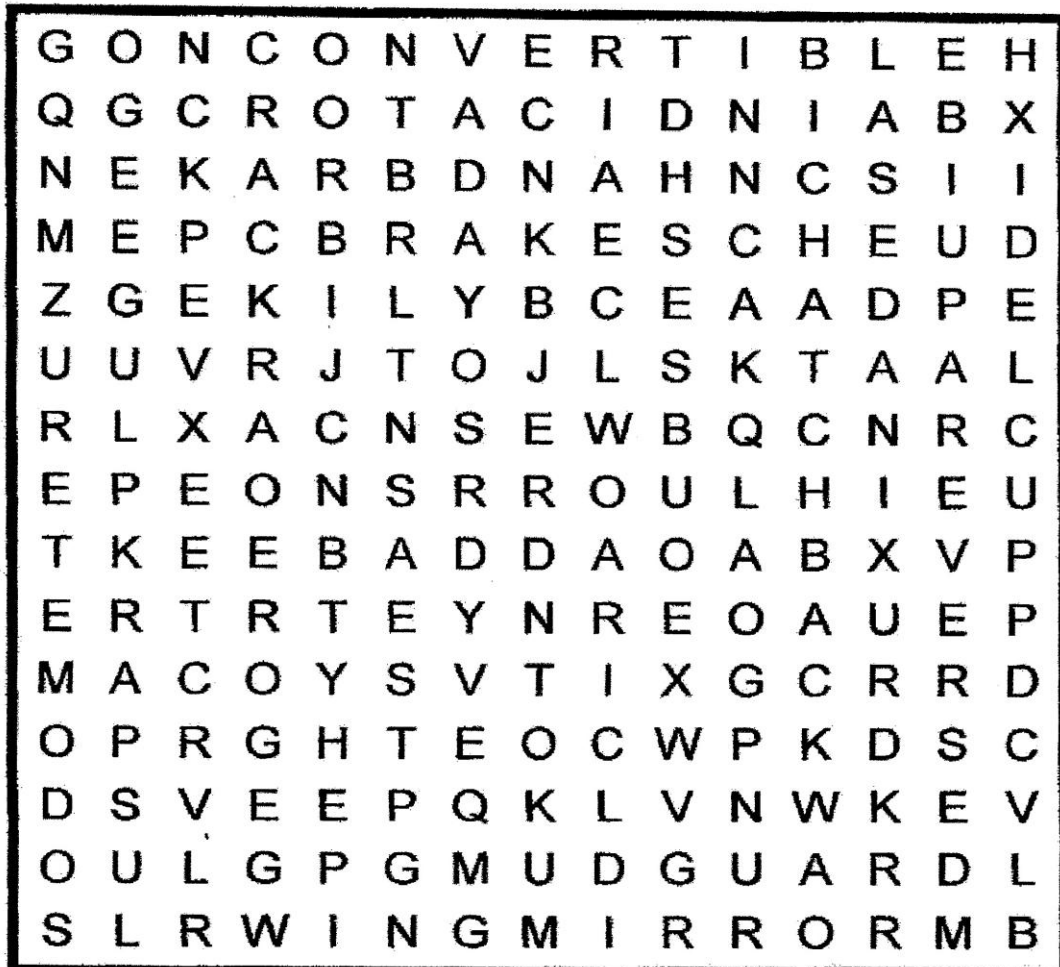
Everything shown is researched and factual with an eye to education, yet presented so the visitor will *experience* people and events rather than just learn about them. However, for those wanting more in-depth information, apps will be available for further insight into the people and places introduced.

Visitors entering the sixteen acres donated by the Westphal family and located where H Street empties onto Riverfront Drive (256) will first see the striking star-shaped museum building flanked by the Arkansas river in the background. Near the front of the property will be a monument to the Five Civilized Tribes, symbolizing the lighthorsemen (tribal mounted police who represented their tribes in various districts).

There is going to be something for everyone, and after this very impressive introduction by Patrick Weeks, we all came away excited and convinced that this unusual museum is going to be a real treasure for the Fort Smith area.



Cars, Cars and More



ACCELERATOR
BODYSHELL
BONNET
BRAKES
CONVERTIBLE
GEAR STICK
GLOVEBOX

HANDBRAKE
HATCHBACK
INDICATOR
MUDGUARD
ODOMETER
PETROL CAP
REVERSE

SEDAN
SPARK PLUG
SUV
TYRE
WINDSCREEN
WING MIRROR



Spark Plugs by Harry Wolk

Time to start thinking of getting our Classics ready for the road. Good performance is dependent on several factors, one being spark plugs. It is easy to remove your spark plugs and clean them. The condition of the spark plug tells a multitude of stories about your engine. Spark plugs with encrusted black carbon is the most common problem.

Cleaning with steel wool is better than nothing. Using a spark plug sand blaster gives the best cleaning. However, this encrusted black carbon is a sign of problems. The causes of this condition may be a cold type of plug, which is proper if you are using the car for long road trips. If all you are doing is driving the car off and on a trailer or around the block or to the bank and back, change to a hot plug.

Excessive oil reaching the combustion chamber, especially at slow or idling speeds, is also a frequent contributor. A hot plug temporarily may solve the problem, but excessive oil is a sign of other problems, as in bad rings or pistons.

If some of the plugs are clean and others have dry sooty lamp black deposits, the sooty plugs are getting too much gasoline, and can be corrected with carburetor adjustments. If a leaner mix is used, and the engine runs irregularly or misfires, go back to original setting and consider a hotter plug.

Incorrect gaps also contribute to fouling, and is attributed to too narrow a gap. Check the gap and published specs on your car and re-gap all plugs. While space does not allow for expansion into other areas causing spark plug problems, the above comments may get you on the road with nominal effort.

Courtesy of Northern Lights of the Ohio Region